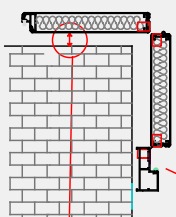
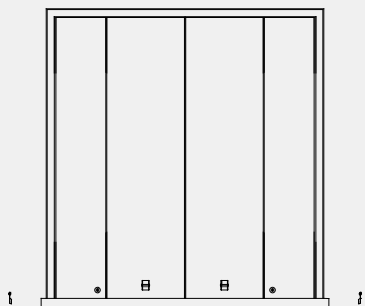


SCURO+

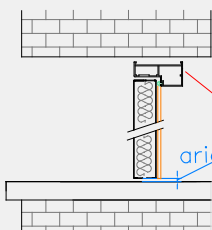
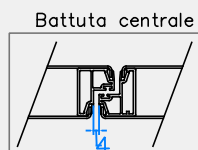
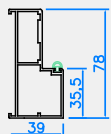
LINEA MODERNA

APPLICAZIONE ALLA PADOVANA CON TELAIO

Lato esterno, anta in lamiera 12/10 o 15/10 con fughe orizzontali da 6/8 mm



Questa misura va da 25 a 30 mm



aria 5

Attenzione per chiusura con spagnoletta prevedere un distanziale di misura





Lato interno, anta in unica lamiera 12/10 o 15/10 senza fresature

